



North Lake College

DALLAS COUNTY COMMUNITY COLLEGE DISTRICT

Construction Sciences Building

Groundbreaking Ceremony

Agenda

Thursday, June 13, 2019 - 2:00 p.m.

Master of Ceremonies

Arthur James

Executive Dean of North and South Campuses, North Lake College

Welcome

Dr. Christa Slejko

President, North Lake College

Remarks

Dr. Joe May

Chancellor, DCCCD

Dorothy Zimmermann

Member, DCCCD Board of Trustees

Karen Hunt

Mayor, City of Coppell

Rick Stopfer

Mayor, City of Irving

Beth Bowman

President/CEO, Irving-Las Colinas Chamber of Commerce

Jeff Varnell

Chairman of the Board, Coppell Chamber of Commerce

Ed Jenkins

Principal & Texas Regional Director, CSRS

Toby Newham

Associate Principal and Project Designer, Beck Architecture

Jane Hanna

President/Executive Director, Construction Education Foundation (CEF)

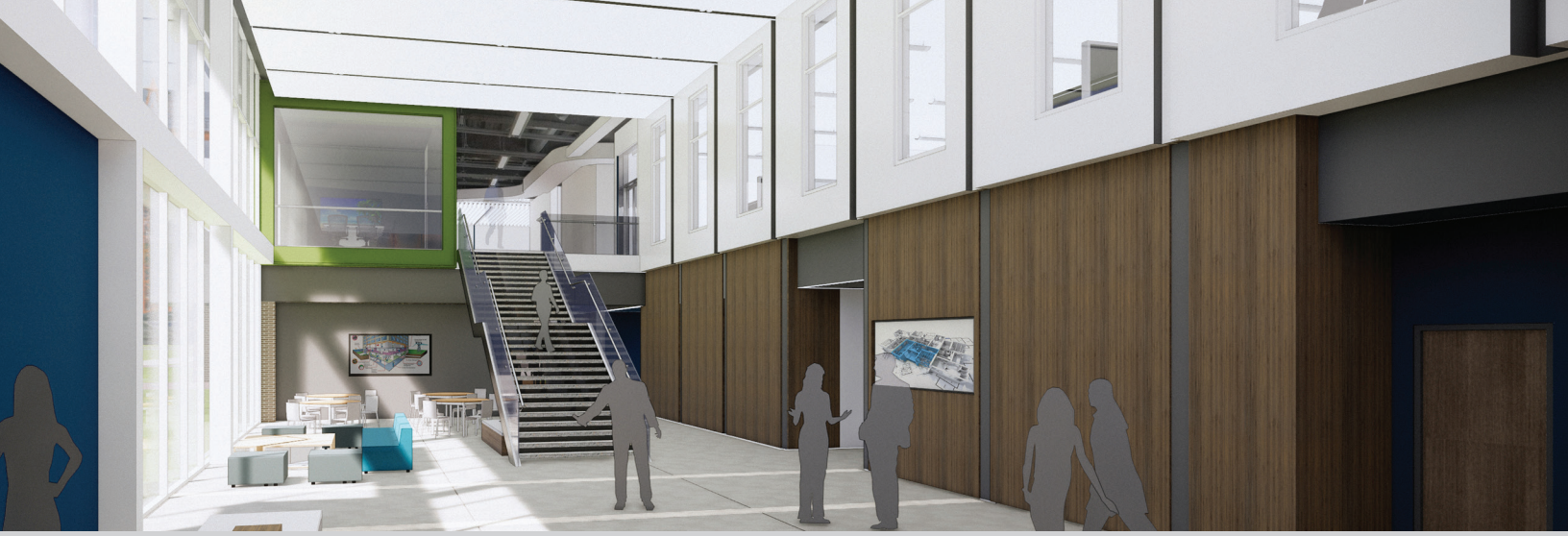
Chris Peck

J.E. Dunn Construction and Chairman of the Board, CEF Executive Committee

Rusty Vaughn

Business Development Texas AirSystems and Chair Project Capital Campaign

Ceremonial Groundbreaking



North Lake College Construction Sciences Building

Architect: Beck Architecture

Square Footage: 98,000+

Floors: 2

Classrooms: 30

Elevators: 2

LEED Certification: Silver

Facility Fact Sheet

The new North Lake College Construction Sciences Building will include interactive, high-tech laboratories and classrooms to support education in the latest construction technologies, systems, and methods.

- Adjacent classrooms and corresponding laboratory space for high quality teaching demonstrations and active learning
- Labs with designated areas for in-progress building construction, sheet metal fabrication, carpentry, plumbing, electrical, HVAC, welding, and pipefitting
- Additional shared labs: soils, fire protection, sprinkler fitting, backflow prevention, medical gases, and safety
- Covered exterior lab space for outdoor equipment use, mock-ups, and assembly installations in various conditions and temperatures
- Support spaces for materials storage, tool room storage, safe lab gas containment, and sophisticated organization for materials delivery and access



Construction education matters!

41% OF THE CURRENT
CONSTRUCTION
WORKFORCE
WILL RETIRE BY **2031**

WE NEED
**CRAFT
SKILLS**

1.4 M
craft professionals
shortage by 2020

41%
current workforce
retires by 2031

80%
construction firms
face difficulty hiring

7/10
jobs don't require
a 4-year degree

SKILLED CRAFTS Rank
among the
TOP 5
HARDEST
ROLES
TO FILL